



1900 Wellworth Ave. • Jackson, MI 49203
517-787-2100

Submittal Data

CMA1418SG-1

Project Name:	
Location:	
Engineer:	
Submitted to:	
Submitted by:	
Reference:	

Approval:	
Date:	
Construction:	
Unit #:	
Drawing #:	

Performance Data

Power supply	Ph-V-Hz	
<u>Cooling</u>		
Capacity	Btu/h	17,500
Input	W	1550
Rated current	A	8
EER	Btu/w	12.2
SEER	Btu/w	14.5
MINIMUM CIRCUIT AMPACITY	A	10
MAX.FUSE	A	15

Compressor Electrical

Model	ASL145DG-C7EU
Type	ROTARY
Brand	HIGHLY
Capacity	Btu/h 14466
Input	W 1390
Rated current(RLA)	A 7.1
Coil Treatment	/
Thermal protector position	Internal
Connection wiring	18ga 2 Conductor

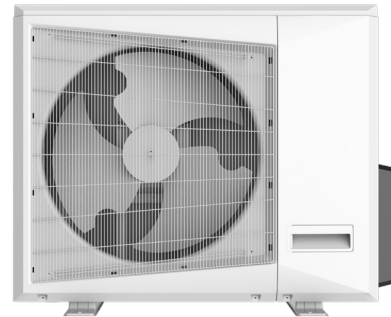
Air Flow & Noise Level

Outdoor air flow	CFM	1900
Outdoor noise level	dB(A)	58

Thermostat type Standard 24v Control

Fan Motor

Model	YDK-75-6P2
Brand	Lvzhi
Input	W 152
RLA	A 0.66
LRA	A 0.41
Winding Resistance	Ω 88.6
Capacitor	uF 3
Speed	r/min 890



Ambient Temperature

Outdoor(cooling) Deg. F 65-109

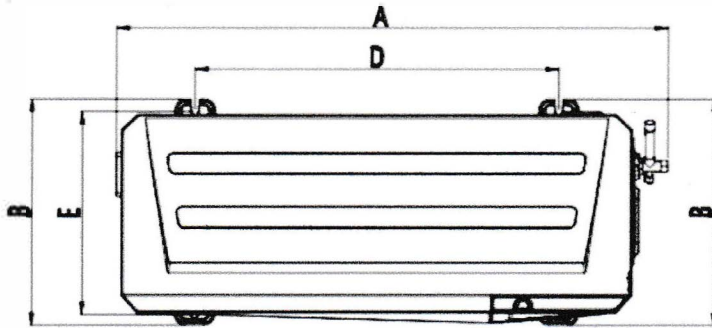
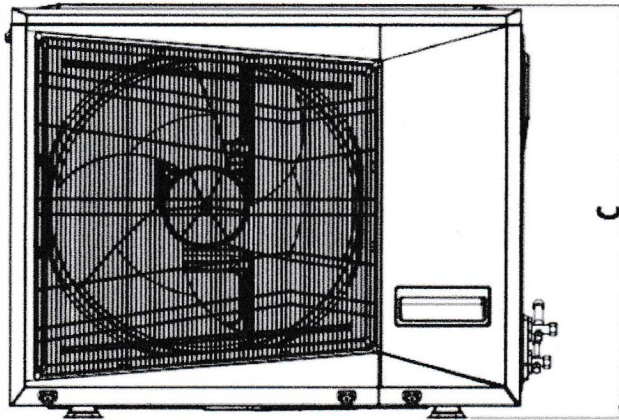
System Operational Data

Design pressure	PSIG Hi (540) Lo(300)
Refrigerant oil/oil charge	ml 480
Refrigerant type/charge	oz 75.84
Refrigerant precharge	g 2150
Additional charge per ft.	oz 0.16
Liquid side/ Gas side	in 1/4" / 1/2"
Max. length	ft 82
Max. height difference	ft 33

Dimensional Data

Dimension(W*D*H)	inch 36.6x15.0x27.6
Packing (W*D*H)	inch 39.0x16.1x30.3
Net/Gross weight	lbs. 103.6/114.6

CMA14--SG



Model	A	B	C	D	E
18K	36.0	15.0	27.6	21.4	12.8

Accessories

83907	Surge Protection
83916	Disconnect with internal surge
83335	60 amp Unfused Disconnect
93642	Bracket
93540	Condenser Pad

**Use of piston-style metering device is typical.
Where TXV's are used, a 15% bleed-type is required.
Use of Non-bleed TXV's will void warranty.**

Bleed-Style TXV's for use with CMA14-SERIES and Comfort-Aire Coils/Air Handlers:

- **67304001** TXV for use with **CMA14 1.0T – 3.0T**
 - (C,M)CG*P Coils
 - HMG/HCG Air Handlers
- **4203** TXV for use with **CMA14 1.5T – 3.0T**
 - (C,M)CG*M Coils
 - HWCG Hydronic Air Handlers